



# Integrated Controller/Antenna HF-0405

## FEATURES

High performance Multi protocol 13.56MHz Controller

Integrated antenna, compact size

3 models , RS232, 422, 485

Reads/Writes ISO14443A, ISO15693 andICODE 1 RIFD Tags (LRP/HMS series tags from EMS)

Auto configurable

8 LED Status Indicator Lights

Backward compatible with HMS827, HMS828, LRP75

Flash Memory for Software Upgrades

## FOR USE WITH

HF Series

HMS Series

LRP Series

Gateway

Hub

Any ISO15693 tags



Designed to operate in harsh, industrial environments, EMS has created high performance, modular RFID products including the HF, LRP, HS, HL and HMS families for the factory integrator and enduser. EMS is known within the industry for products that support virtually every industrial communication protocol making them ideal for integrators and endusers facing real life scenarios.

The HF-0405 RFID Controller from EMS provides cost effective RFID data collection solutions for demanding process control, material handling and automation applications. Escort Memory Systems' built-in error checking routines ensure that the Controller receives tag data correctly even in environments of heavy RF interference. The controller features 8 LED status indicator lights for Power, Communication, RF Activity, and Network Address.

## SPECIFICATIONS

*Operating Temperature*  
- 4° to 120°F (- 20° to 49°C)

*Storage Temperature*  
- 40° to 185°F (- 40° to 85°C)

*Vibration Resistance*  
IEC 68-2-6 Test FC 1.5mm; 10 to 55Hz; 2 Hours Each Axis

*Shock Resistance*  
IEC 68-2-27 Test EA 30g; 11ms; 3 Shocks Each Axis

*Humidity*  
100% Non-Condensing

*Dimensions*  
40mm x 56mm x 25mm

*Weight*  
475 grams

*Enclosure Protection Class*  
IP67

*Voltage*  
12-24VDC  $\pm 10\%$ ; 150mA@24VDC (3.60W)

*Connector*  
M12 Circular Male IP67

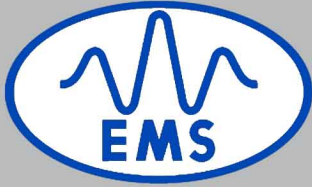
*LED Indicators*  
8 Discrete including Power, Communication, RF Activity, Network Address

*Air protocols*  
6.5kBaud/106k Baud with CRC Error Detection

*Communication Standard*  
Point to Point Baud Rates: 9600, 19.2k, 38.4k, 57.6k, 115.2k

*Communication Standard*  
Multi-drop Network Baud Rate: 9600 or 115.2K

**RFID AT  
WORK™**



# Integrated Controller/Antenna HF-0405

## APPLICATIONS

Manufacturing, Work in Progress (WIP)

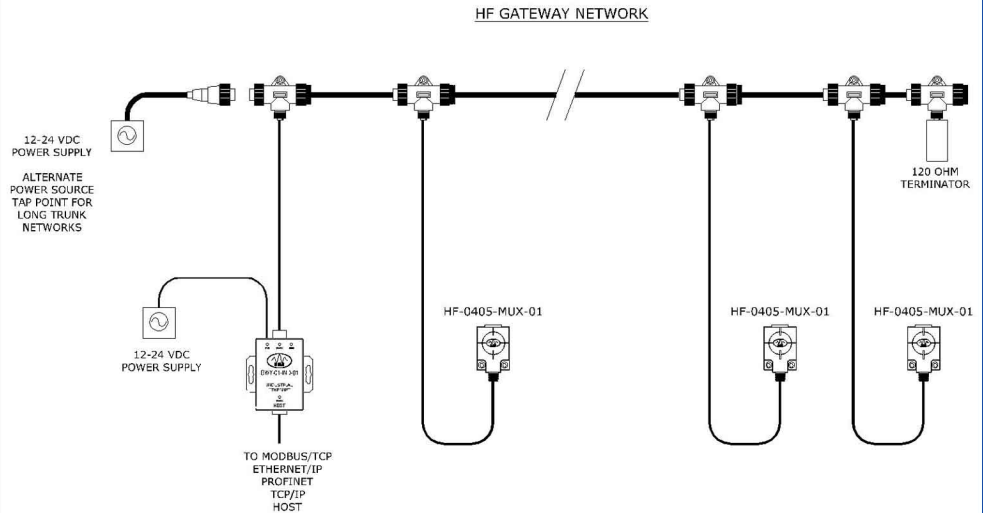
Material Handling

Logistics/Warehousing

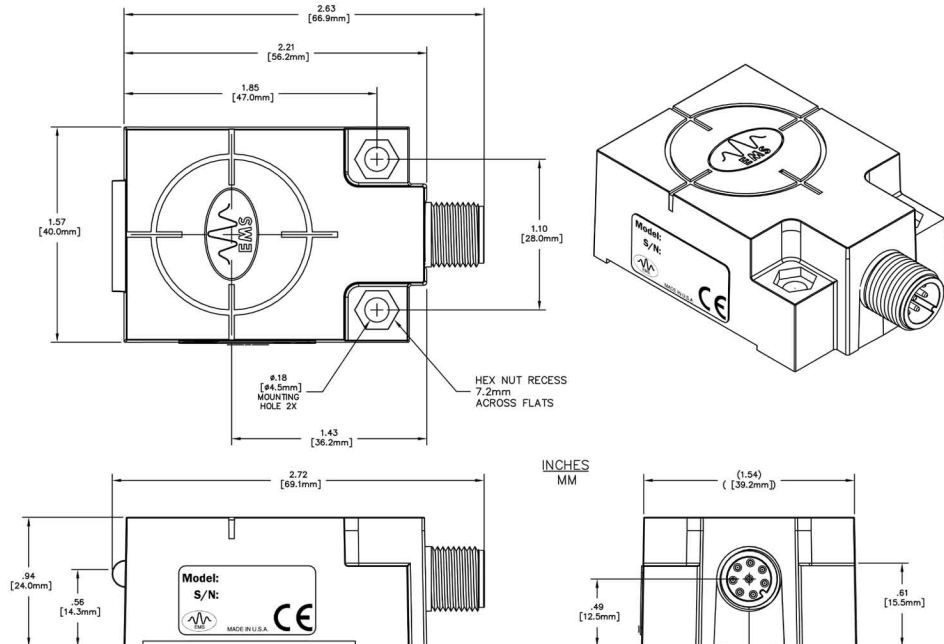
## RANGES FOR HF-0405

	in/mm
LRP-L90140S	3/75
LRP125S	1.5/38
LRP-L2666S	1.8/45
LRP525(HT)S	2.8/70
LRP-C5486S	3/75
HMS125(HT)	.8/20
HMS150(HT)	1.8/45
LRP-L4982S	2.6/65

## NETWORK DRAWINGS



## MECHANICAL DRAWINGS



**RFID AT  
WORK™**