

**VSM** is a monitoring device compatible with all DataVS2 vision sensor models. The device integrates a 3.5" LCD color display and 8 push buttons. It also embeds a standard TCP/IP Ethernet interface thus it can be connected either directly to a specific vision sensor or to a LAN where more sensors have been previously installed.

VSM allows to display images and results as well as to change the running inspection or also to adjust the vision sensor functioning parameters. Thanks to this wide range of functionalities, the device represents an excellent and complete HMI interface ideal for automated production lines attended by operators.

## DataVS2 - VSM



VISION

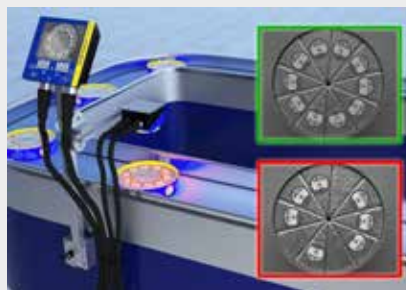


### HIGHLIGHTS

- 3.5" LCD color display and 8 push buttons
- 20 additional memory slots
- Images and results visualization
- Parameter fine tuning
- DIN rail or panel mounting
- 2 industrial M12 connectors

### APPLICATIONS

#### Packaging & Food



#### Bottling & Beverages



## PRODUCT DESCRIPTION



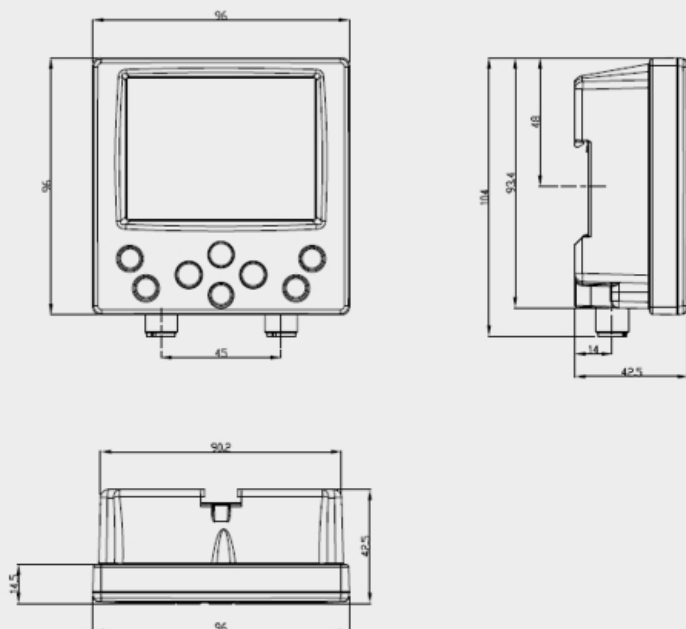
## MAIN FEATURES



## TECHNICAL DATA

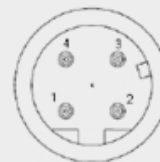
Power supply:	24 Vdc $\pm$ 10%
Ripple:	2.4 Vpp max
Current drwa:	Max 150 mA @ 24 Vdc max
Dimensions:	96 x 96 x 39 mm
Indicators:	8 LEDs + 3.5" LCD color display
Setup:	DataVS2 GUI
Data retention:	Non-volatile FLASH memory
Operating temperature:	-10 °C ... +55 °C
Storage temperature:	-25 °C ... +70 °C
Vibration:	14 mm @ 2 to 10 Hz; 1.5 mm @ 13 to 55 Hz; 2 g @ 70 to 200 Hz; 2 hours on each axis
Shock resistance:	11 ms (30 G) 6 shocks for every axis
Housing material:	ABS
Mechanical protection:	IP20 (IP40 when panel mounted)
Connections:	2 x M12 4 poles
Weight:	180 g

## DIMENSIONS



mm

## CONNECTIONS



## MODEL SELECTION AND ORDER INFORMATION

MODEL	DESCRIPTION	ORDER N°
DataVS2-VSM	VSM monitor for DataVS2 series	95A901480

## ACCESSORY SELECTION AND ORDER INFORMATION

MODEL	DESCRIPTION	ORDER N°
CV-A1-32-B-03	3m M12 4pin shielded power supply cable	95A252790
CV-A1-32-B-05	5m M12 4pin shielded power supply cable	95A252800
DataVS-CV-VSM-02	2m point-to-point DataVS2-VSM connection cable	95A901700
DataVS-CV-VSM-04	4m point-to-point DataVS2-VSM connection cable	95A901710
DataVS-CV-RJ45C-03	3m ethernet crossed cable	95A901340
DataVS-CV-RJ45D-03	3m ethernet straight cable	95A901350

Rev. 01, 06/2013



[www.datalogic.com](http://www.datalogic.com)

The company endeavours to continuously improve and renew its products, for this reason the technical data and contents of this catalogue may undergo variations without prior notice. For correct installation and use, the company can guarantee only the data indicated in the instruction manual supplied with the products.